

# HOCKING HILLS STATE PARK & REGION



### ROCK HOUSE

- Rock House Gorge Trail - 0.6 mi
- Rock House Rim Trail - 0.2 mi
- One Way
- Steps

### CANTWELL CLIFFS

- Cantwell Rim Trail - 1.1 mi
- Gorge Trail - 0.2 mi
- One Way
- Steps

### CONKLES HOLLOW State Nature Preserve

- Gorge Trail - 0.5 mi
- Rim Trail - 1.9 mi
- State Forest Equestrian Trail
- State Forest Hiking Trail
- One Way
- Steps
- No pets allowed in state nature preserves.

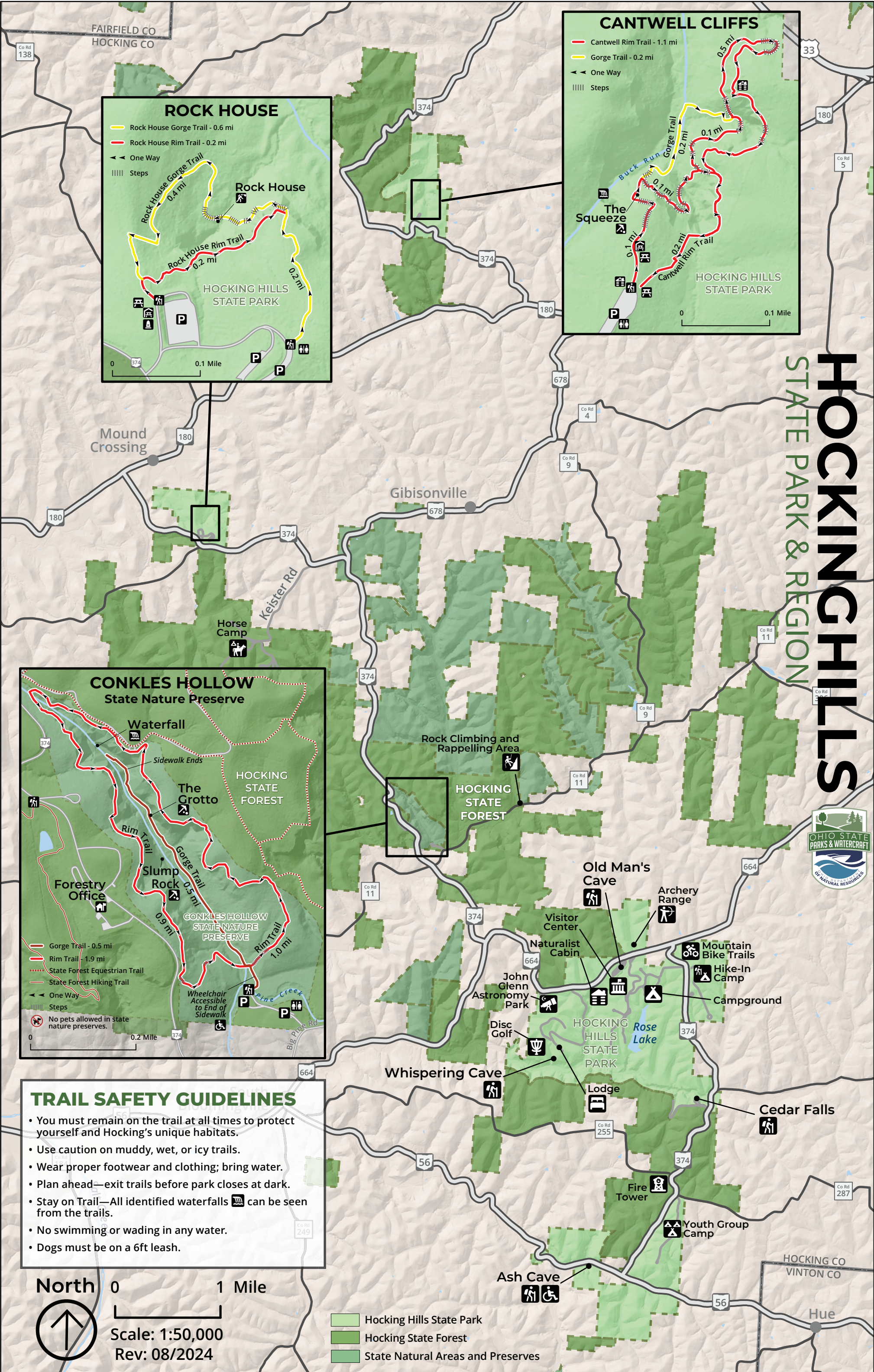
- ### TRAIL SAFETY GUIDELINES
- You must remain on the trail at all times to protect yourself and Hocking's unique habitats.
  - Use caution on muddy, wet, or icy trails.
  - Wear proper footwear and clothing; bring water.
  - Plan ahead—exit trails before park closes at dark.
  - Stay on Trail—All identified waterfalls can be seen from the trails.
  - No swimming or wading in any water.
  - Dogs must be on a 6ft leash.

North

0 1 Mile

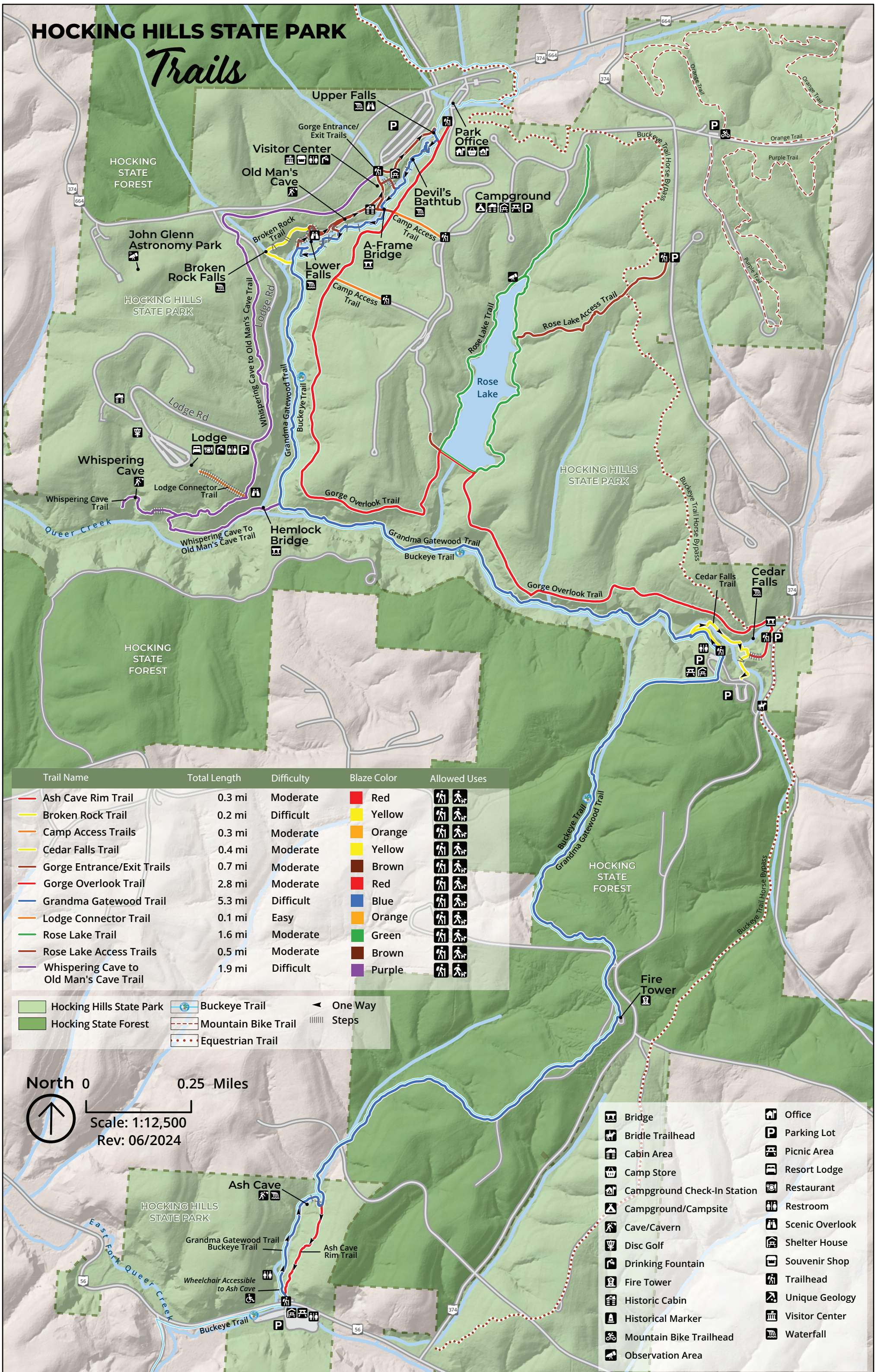
Scale: 1:50,000  
Rev: 08/2024

- Hocking Hills State Park
- Hocking State Forest
- State Natural Areas and Preserves



# HOCKING HILLS STATE PARK

## Trails



Trail Name	Total Length	Difficulty	Blaze Color	Allowed Uses
Ash Cave Rim Trail	0.3 mi	Moderate	Red	[Hiking] [Bicycling]
Broken Rock Trail	0.2 mi	Difficult	Yellow	[Hiking] [Bicycling]
Camp Access Trails	0.3 mi	Moderate	Orange	[Hiking] [Bicycling]
Cedar Falls Trail	0.4 mi	Moderate	Yellow	[Hiking] [Bicycling]
Gorge Entrance/Exit Trails	0.7 mi	Moderate	Brown	[Hiking] [Bicycling]
Gorge Overlook Trail	2.8 mi	Moderate	Red	[Hiking] [Bicycling]
Grandma Gatewood Trail	5.3 mi	Difficult	Blue	[Hiking] [Bicycling]
Lodge Connector Trail	0.1 mi	Easy	Orange	[Hiking] [Bicycling]
Rose Lake Trail	1.6 mi	Moderate	Green	[Hiking] [Bicycling]
Rose Lake Access Trails	0.5 mi	Moderate	Brown	[Hiking] [Bicycling]
Whispering Cave to Old Man's Cave Trail	1.9 mi	Difficult	Purple	[Hiking] [Bicycling]

[Light Green Box]	Hocking Hills State Park	[Blue Circle with Arrow]	Buckeye Trail	[Arrow]	One Way
[Dark Green Box]	Hocking State Forest	[Dashed Line]	Mountain Bike Trail	[Vertical Lines]	Steps
		[Dotted Line]	Equestrian Trail		

North 0  
 0.25 Miles  
 Scale: 1:12,500  
 Rev: 06/2024

[Bridge Icon]	Bridge	[Office Icon]	Office
[Bridle Trailhead Icon]	Bridle Trailhead	[Parking Lot Icon]	Parking Lot
[Cabin Area Icon]	Cabin Area	[Picnic Area Icon]	Picnic Area
[Camp Store Icon]	Camp Store	[Resort Lodge Icon]	Resort Lodge
[Campground Check-In Station Icon]	Campground Check-In Station	[Restaurant Icon]	Restaurant
[Campground/Campsite Icon]	Campground/Campsite	[Restroom Icon]	Restroom
[Cave/Cavern Icon]	Cave/Cavern	[Scenic Overlook Icon]	Scenic Overlook
[Disc Golf Icon]	Disc Golf	[Shelter House Icon]	Shelter House
[Drinking Fountain Icon]	Drinking Fountain	[Souvenir Shop Icon]	Souvenir Shop
[Fire Tower Icon]	Fire Tower	[Trailhead Icon]	Trailhead
[Historic Cabin Icon]	Historic Cabin	[Unique Geology Icon]	Unique Geology
[Historical Marker Icon]	Historical Marker	[Visitor Center Icon]	Visitor Center
[Mountain Bike Trailhead Icon]	Mountain Bike Trailhead	[Waterfall Icon]	Waterfall
[Observation Area Icon]	Observation Area		